

# WOLFFLY

PRECISION BEARING

虽然很多全球 **500强** 企业使用我们生产的轴承，  
品质稳定可靠，但是，我们的价格不高！

Many Fortune Global **500s** using our bearing which with stable and  
reliable quality, nonetheless, our price is not high!



**镇江沃尔夫重工部件有限公司轴承工厂**

**WOLFFLY · BEARING**



# 产品展示

Product Exhibition



WOLFFLY

## 【前言】 Foreword

当我提笔写这份前言的时候，思潮澎湃，心情激动。我想，这是非常好的一个和客户沟通的机会，让您了解我们。为此，我在介绍企业的同时，也激动的表达着我们的心声和对顾客的承诺。

作为专业的高可靠性、高耐用性轴承制造商，我们专注于为内燃机、工程机械、农机、油缸、变速箱、变矩器、电机、减速机、电梯、举升和输送设备、食品和包装机械等行业提供高品质的轴承，我们针对于这些工况中高温、高转速、冲击力大、离心负载大、大扭矩、大载荷的应用特点，我们进行了针对性的特殊设计和特殊的生产工艺，让我们的轴承在使用中比其他厂家的轴承更可靠、更耐用。

“质量”是企业生存和发展的核心竞争要素。在质量保证方面，我们不仅通过完整的质量保证体系，从头到尾对产品整个制造过程给予严格的过程控制，确保高度稳定的过程能力，而且，所有产品 100%都要进行检验测试合格，方可提供给客户使用，以确保“零”缺陷，“零”故障反馈。

我们目前已经和上述应用领域中的龙头企业进行长期、批量的配套供货，这些客户都对我们产品质量的可靠性和稳定性给予了高度肯定的评价。

“专注铸就成功”作为沃尔夫的经营理念，已深入到团队的每位成员思想和行为里。围绕这样的理念，“追根到底，专注做好每一件事”也成为了全体员工的行事准则。

我们的宗旨就是：长期持续地为客户提供高品质的产品和快捷周到的服务，让其充分满意；同时，也为我们的员工提供更好的福利和更广阔的事业舞台。为此，我们会为履行这一宗旨而付出最大的努力。

董事长：肖涛

I was excited and my thoughts surging when I wrote down the forewords, this is a good opportunity to make you know about us. Moreover, I also express our aspirations and commitments.

WOLFFLY as the professional high reliability and high durability bearings manufacturer, we focus on supplying top quality products for Combustion Engine, Engineering Machinery, Agricultural Machinery, Hydraulic Cylinder, Gearbox, Torque Converter, Electrical Machine, Reduction Gears, Elevator, Lift and Conveying Equipment, Food and Packaging Machinery. On the basis of working condition of high temperature, high rotation speed, large impact, centrifugal loads, heavy loading, we implement special design and manufacture technique to insure the bearing more reliable and durable.

QUALITY is the core-competence of the existence and development, our factory approved by the integrated quality management system, strictly control goes through the manufacturing to make sure high stability process, and also all the products tested to guarantee imperfection and fault feedback.

Currently we have established a long-term bulk supply relationship with the above application fields leading enterprise. They speak highly of our products with its reliability and stability quality.

CONCENTRATION MAKES SUCCESS as our management principle has penetrated into thoughts and behaviors of us, putting our mind to do everything is the standard of our behaviors.

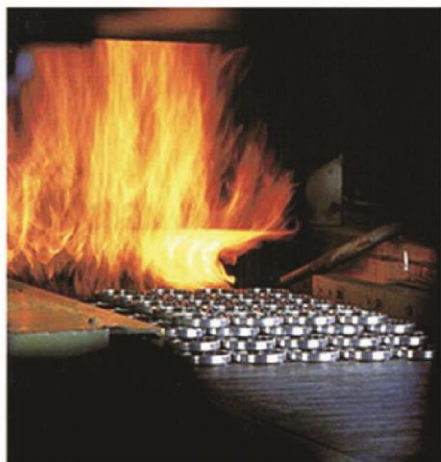
We aim to supplying high quality products and quick thoughtful services continuously, and providing better welfare and wider career stage for employees. For this purpose, we'll make great efforts to carry out our goals.

Chairman : Mr. Teller



**WOLFFLY**  
PRECISION BEARING

**制造**  
Manufacture

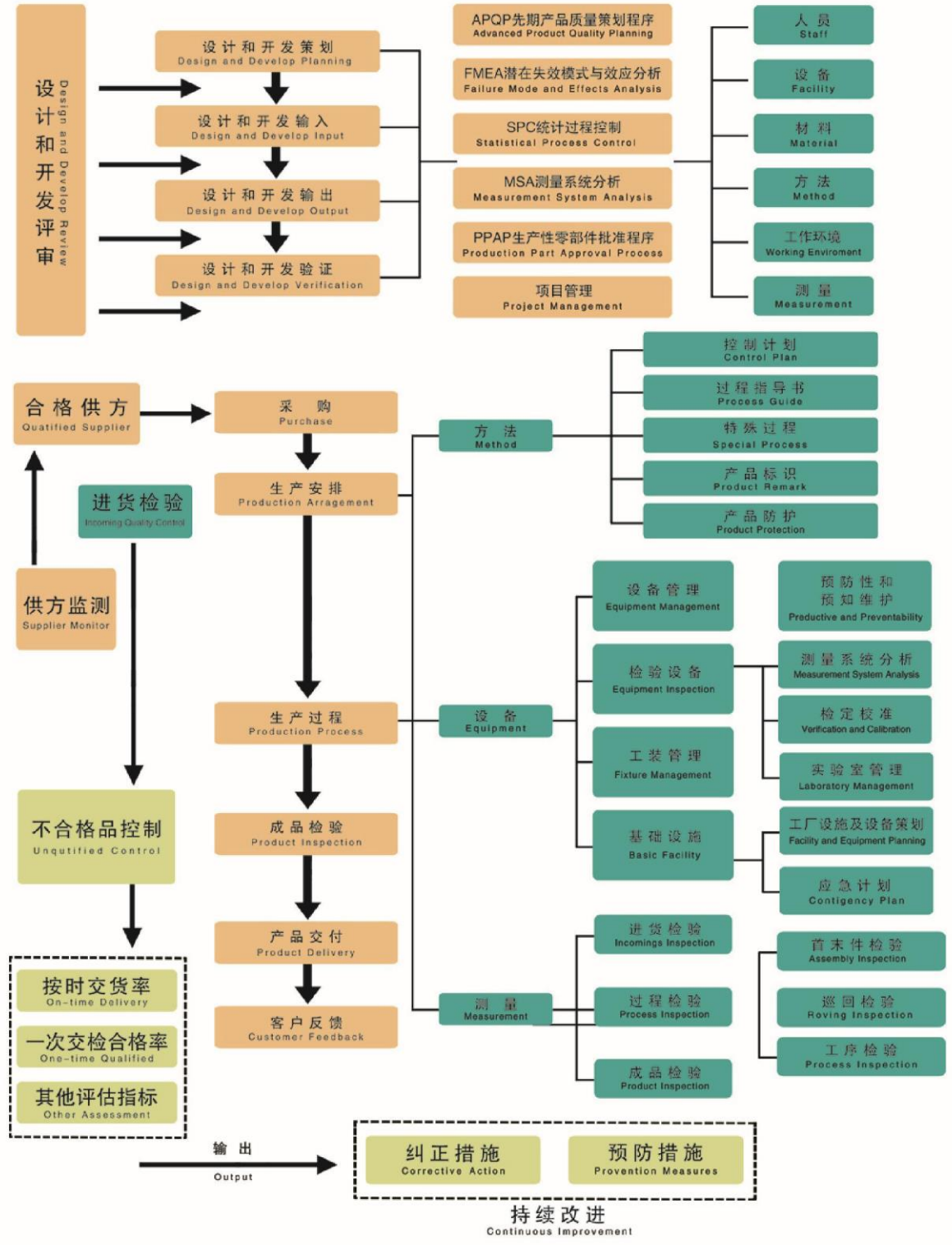


Automatic Mill Line  
全自动磨装线

WOLFFLY JAPAN

# 质量管理体系

Quality Control System



# 检验

Inspection



1	2	3
4	5	
6	7	8



**1 轴承振动仪**  
Bearing Vibration Meter

**2 圆度分析**  
Roundness Analysis

**3 轮廓仪**  
Profilometer

**4 硬度测试**  
Hardness Testing

**5 拉压试验**  
Tension Compression Testing

**6 金相分析**  
Element Analysis

**7 智能元素分析**  
Element Analysis

**8 碳硫联测分析**  
Carbon Sulfur Measurement Analysis

# 应用领域

## Application Field



**柴油机**  
Diesel Engine  
**汽油机**  
Gasoline Engine  
**发电机**  
Generator  
**变速箱**  
Gearbox  
**变矩器**  
Torque Converter

**农机**  
Agricultural Machinery  
**内燃机**  
Combustion Engine  
**电机**  
Electrical Machine  
**减速机**  
Reduction Gears  
**电梯**  
Elevator



**叉车**  
Forklift  
**油缸**  
Hydraulic Cylinder  
**工程机械**  
Engineering Machinery

**举升和输送设备**  
Lift and Conveying Equipment  
**食品和包装机械**  
Food and Packaging Machinery



**P**rofessional 专业的



**公司的质量管理过程严格执行ISO9001国际质量管理体系**

The company's quality management process strictly enforce the ISO9001 international quality management system

**我司部分应用客户:**  
Some Application Customers



日本小松集团  
Komatsu Group



韩国现代重工  
Hyundai Heavy Industries



海斯特叉车  
HYSTER Forklift



合力叉车  
HELI Forklift



山推股份  
ShanTui Group



徐工集团  
XuGong Group



柳工  
LiuGong



中南传动  
ZhongNan Gearbox



燎原航空  
Prairie Airline



开普动力  
KIPOR Power

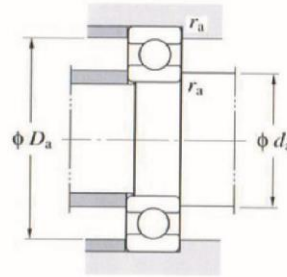
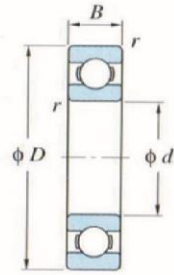


科普动力  
KOOP POWER



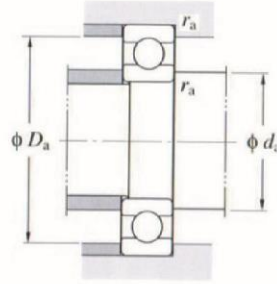
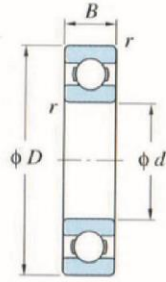
洋马动力  
YANMAR POWER





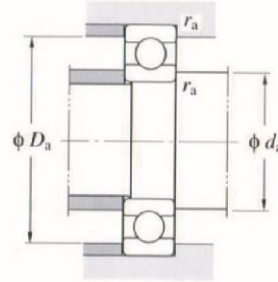
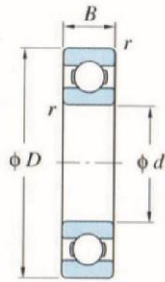
深沟球轴承技术参数 Technical Parameter of Deep Groove Ball Bearing

轴承型号 Bearing No.	外形尺寸 Overall Dimension				额定载荷 (KN) Rated Loading		极限转速 (转/分) Limit Speed		安装相关尺寸 Installation Dimension		
	内径 (d)	外径 (D)	宽度 (B)	倒角 (r)	动载荷	静载荷	润滑脂 Grease	润滑油 Lubricant	d <sub>a</sub> (最小)	D <sub>a</sub> (最大)	r <sub>a</sub> (最大)
	mm	mm	mm	mm	Cr	Cor	r/min	r/min	mm	mm	mm
60 系列											
6000	10	26	8	0.3	4.55	1.95	31000	36000	12	24	0.3
6001	12	28	8	0.3	5.10	2.40	27000	32000	14	26	0.3
6002	15	32	9	0.3	5.60	2.85	23000	27000	17	30	0.3
6003	17	35	10	0.3	6.00	3.25	21000	25000	19	33	0.3
6004	20	42	12	0.6	9.40	5.05	17000	21000	24	38	0.6
6005	25	47	12	0.6	10.1	5.85	15000	18000	29	43	0.6
6006	30	55	13	1	13.2	8.25	13000	15000	35	50	1
6007	35	62	14	1	15.9	10.3	11000	13000	40	58	1
6008	40	68	15	1	16.7	11.5	10000	12000	45	63	1
6009	45	75	16	1	21.0	15.1	9200	11000	50	70	1
6010	50	80	16	1	21.8	16.6	8400	9900	55	75	1
6011	55	90	18	1.1	28.3	21.2	7600	8900	61.5	83.5	1
6012	60	95	18	1.1	29.4	23.2	7100	8400	66.5	88.5	1
6013	65	100	18	1.1	30.5	25.2	6600	7800	71.5	93.5	1
6014	70	110	20	1.1	38.1	30.9	6100	7200	76.5	103.5	1
6015	75	115	20	1.1	39.6	33.5	5700	6800	81.5	108.5	1
6016	80	125	22	1.1	47.6	39.8	5300	6300	86.5	118.5	1
6017	85	130	22	1.1	49.5	43.1	5000	5900	91.5	123.5	1
6018	90	140	24	1.5	58.2	49.7	4700	5600	98	132	1.5
6019	95	145	24	1.5	60.4	53.9	4400	5200	103	137	1.5
6020	100	150	24	1.5	61.2	54.2	4300	5100	108	142	1.5
6021	105	160	26	2	72.3	65.8	4000	4700	114	151	2
6022	110	170	28	2	82.0	73.0	3800	4500	119	161	2
6024	120	180	28	2	85.0	79.3	3600	4200	129	171	2
6026	130	200	33	2	106	101	3200	3800	139	191	2
6028	140	210	33	2	110	109	3000	3600	149	201	2
6030	150	225	35	2.1	125	126	2800	3300	161	214	2



深沟球轴承技术参数 Technical Parameter of Deep Groove Ball Bearing

轴承型号 Bearing No.	外形尺寸 Overall Dimension				额定载荷 (kN) Rated Loading		极限转速 (转/分) Limit Speed		安装相关尺寸 Installation Dimension		
	内径 (d)	外径 (D)	宽度 (B)	倒角 (r)	动载荷	静载荷	润滑脂 Grease	润滑油 Lubricant	d <sub>a</sub> (最小)	D <sub>a</sub> (最大)	r <sub>a</sub> (最大)
	mm	mm	mm	mm	Cr	Cor	r/min	r/min	mm	mm	mm
62 系列											
6200	10	30	9	0.6	5.10	2.40	24000	29000	14	26	0.6
6201	12	32	10	0.6	6.80	3.05	22000	27000	16	28	0.6
6202	15	35	11	0.6	7.65	3.75	20000	24000	19	31	0.6
6203	17	40	12	0.6	9.55	4.80	17000	21000	21	36	0.6
6204	20	47	14	1	12.8	6.65	15000	17000	25	42	1
6205	25	52	15	1	14.0	7.85	13000	15000	30	47	1
6206	30	62	16	1	19.5	11.3	11000	13000	35	57	1
6207	35	72	17	1.1	25.7	15.4	9200	11000	41.5	65.5	1
6208	40	80	18	1.1	29.1	17.8	8300	10000	46.5	73.5	1
6209	45	85	19	1.1	32.7	20.3	7700	9200	51.5	78.5	1
6210	50	90	20	1.1	35.1	23.3	7100	8500	56.5	83.5	1
6211	55	100	21	1.5	43.4	29.4	6300	7600	63	92	1.5
6212	60	110	22	1.5	52.4	36.2	5700	6900	68	102	1.5
6213	65	120	23	1.5	57.2	40.1	5400	6400	73	112	1.5
6214	70	125	24	1.5	62.2	44.1	5100	6100	78	117	1.5
6215	75	130	25	1.5	67.4	48.3	4800	5800	83	122	1.5
6216	80	140	26	2	72.7	53.0	4500	5400	89	131	2
6217	85	150	28	2	84.0	61.9	4200	5000	94	141	2
6218	90	160	30	2	96.1	71.5	3900	4700	99	151	2
6219	95	170	32	2.1	109	81.9	3700	4400	106	159	2
6220	100	180	34	2.1	122	93.1	3500	4200	111	169	2
6221	105	190	36	2.1	133	105	3300	3900	116	179	2
6222	110	200	38	2.1	144	117	3100	3700	121	189	2
6224	120	215	40	2.1	155	131	2900	3400	131	204	2
6226	130	230	40	3	167	146	2700	3200	143	217	2.5
6228	140	250	42	3	170	150	2400	2900	153	237	2.5
6230	150	270	45	3	176	168	2200	2700	163	257	2.5



深沟球轴承技术参数 Technical Parameter of Deep Groove Ball Bearing

轴承型号 Bearing No.	外形尺寸 Overall Dimension				额定载荷 (kN) Rated Loading		极限转速 (转/分) Limit Speed		安装相关尺寸 Installation Dimension		
	内径 (d)	外径 (D)	宽度 (B)	倒角 (r)	动载荷	静载荷	润滑脂 Grease	润滑油 Lubricant	d <sub>a</sub> (最小)	D <sub>a</sub> (最大)	r <sub>a</sub> (最大)
	mm	mm	mm	mm	Cr	Cor	r/min	r/min	mm	mm	mm
63 系列											
6300	10	35	11	0.6	8.10	3.45	22000	27000	14	31	0.6
6301	12	37	12	1	9.70	4.20	20000	25000	17	32	1
6302	15	42	13	1	11.4	5.45	17000	20000	20	37	1
6303	17	47	14	1	13.6	6.65	15000	18000	22	42	1
6304	20	52	15	1.1	15.9	7.85	14000	17000	26.5	45.5	1
6305	25	62	17	1.1	20.6	11.3	11000	13000	31.5	55.5	1
6306	30	72	19	1.1	26.7	15.0	9600	12000	36.5	65.5	1
6307	35	80	21	1.5	33.4	19.3	8500	10000	43	72	1.5
6308	40	90	23	1.5	40.7	24.0	7700	9200	48	82	1.5
6309	45	100	25	1.5	48.9	29.5	6800	8100	53	92	1.5
6310	50	110	27	2	62.0	38.3	6100	7300	59	101	2
6311	55	120	29	2	71.6	45.0	5600	6700	64	111	2
6312	60	130	31	2.1	81.9	52.2	5200	6200	71	119	2
6313	65	140	33	2.1	92.7	59.9	4800	5800	76	129	2
6314	70	150	35	2.1	104	68.2	4500	5400	81	139	2
6315	75	160	37	2.1	113	77.2	4200	5000	86	149	2
6316	80	170	39	2.1	123	86.7	3900	4700	91	159	2
6317	85	180	41	3	133	96.8	3700	4400	98	167	2.5
6318	90	190	43	3	143	107	3500	4200	103	177	2.5
6319	95	200	45	3	153	119	3300	4000	108	187	2.5
6320	100	215	47	3	173	141	3000	3600	113	202	2.5
64 系列											
6403	17	62	17	1.1	20.7	9.85	13000	15000	23.5	55.5	1
6404	20	72	19	1.1	31.0	15.2	11000	13000	26.5	65.5	1
6405	25	80	21	1.5	36.1	19.4	9100	11000	33	72	1.5
6406	30	90	23	1.5	43.4	23.9	8100	9700	38	82	1.5
6407	35	100	25	1.5	55.0	31.0	7200	8600	43	92	1.5

## 镇江沃尔夫重工部件有限公司轴承工厂 ( WOLFFLY · BEARING )

地址: 江苏省镇江市丹徒新区工业园恒园路78号/NO.78 Hengyuan Road, Dantu New Industry Zone, Zhenjiang, China

Tel: (外销部/oversea calls)86-511-85589989

(内销部/domestic calls) 0511-85589993

Mob:0086-18952858888

Fax:86-511-85589997/85589986

网址/Web:[www.wolffly-jaf.com](http://www.wolffly-jaf.com)

E-mail: (外销部/oversea sales) [wolf-66@wolffly-jaf.com](mailto:wolf-66@wolffly-jaf.com)

邮编/Code:212028

(内销部/domestic sales) [wolf-68@wolffly-jaf.com](mailto:wolf-68@wolffly-jaf.com)